

S.Ford, M. Gibson and G. Duke 'The lichens of *Nothofagus cunninghamii*-dominated rainforests and *Acacia melanoxylon*-dominated forest in the Otways, Victoria.'

The following figure should replace **Figure 2**.

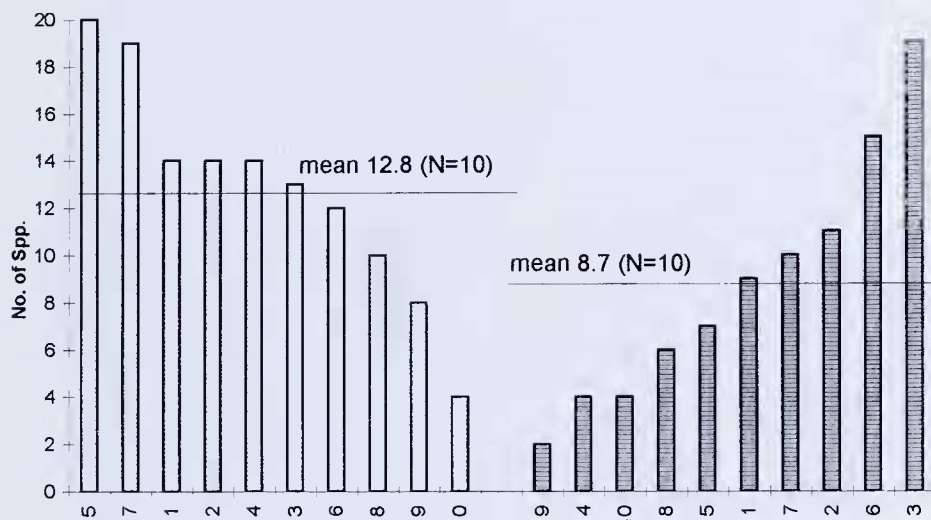


Figure 2. Species richness per quadrat in the two forest types. A *t* test on the difference between the means was not significant with $p = 0.085$.

The figure caption remains the same.